

OPTC 27

Pressure Transmitters (27 mm body)

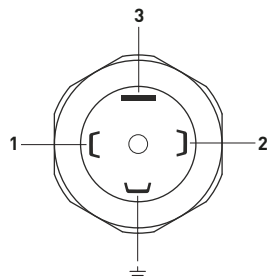
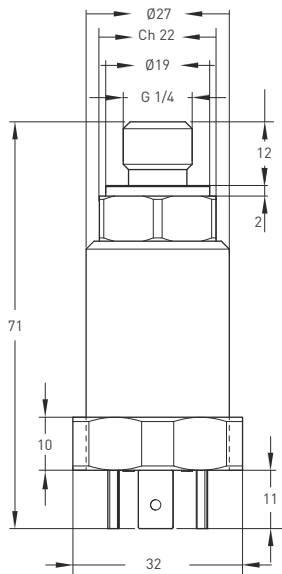


- 2, 2,5, 4, 6, 10, 16, 25, 30, 40, 50, 100, 150, 200, 250, 350, 400 bar
- Sonsuz çözünürlük
- IP 65



Technical Specifications	
Range	2, 2,5, 4, 6, 10, 16, 25, 30, 40, 50, 100, 150, 200, 250, 350, 400 bar
Output signal	4-20 mA(2-wire), 0-10 V(3-wire), 0,5 - 4,5 V // 0,1 - 1 0,1 V 1 - 10 V // 0,1 - 5,1 V (custom designs)
Resolution	Infinite
Accuracy - Linearity	typ : $\pm 0,25\%$ FS (BFSL method) (1) max : $\pm 1\%$ FS (BFSL method) (2)
Update time	<1 ms
Overpressure range	2x pressure range
Burst pressure	3x pressure range
Power supply	8-24 VDC or 12-28 VDC
Power consumption	max: 20 mA, <8 mA
Insulation resistance	>1500 Mohm @250 VDC
Case material	Stainless steel
Protection level	IP 65
Electrical connections	Reverse polarity
Operating temperature	-40°C ... +80°C

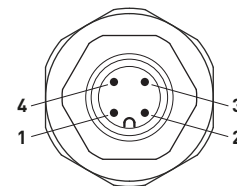
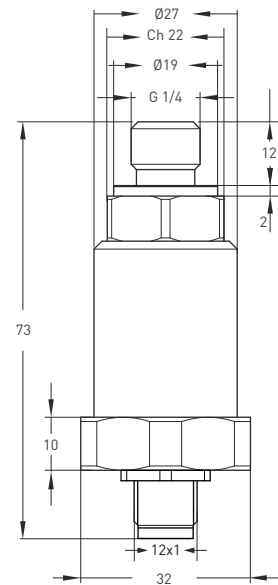
CH1 Connector Output



MALE CONNECTOR

Voltage output		Current Output	
1	0V	1	+Vs
2	Vout	2	Iout
3	+Vs		

CN4A: M12, 4 Pin Connector Output

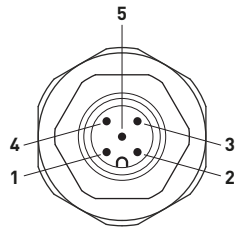
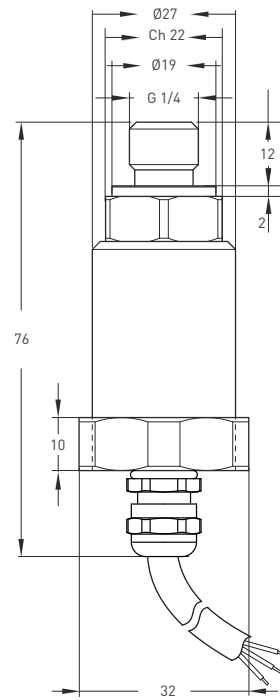
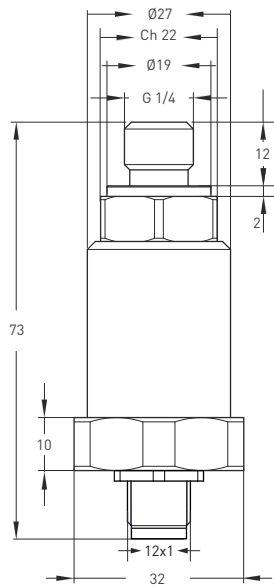


MALE CONNECTOR

Voltage output		Current output	
1	GND	1	+Vs
2	Vout	2	Iout
3	+Vs		

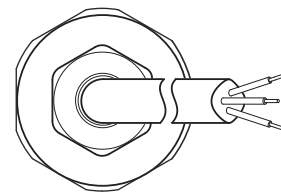
CN5A: M12, 5 Pin Connector Output

Cable Output



MALE CONNECTOR

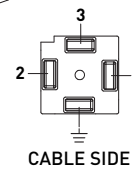
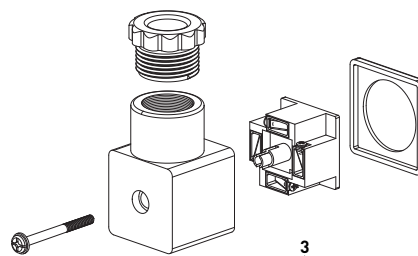
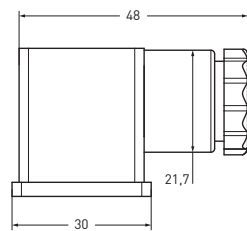
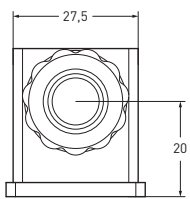
Voltage output		Current output	
1	GND	1	+Vs
2	Vout	2	Iout
3	+Vs		



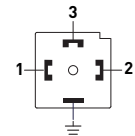
CABLE OUTPUT

Voltage output		Current output	
+Vs	Brown	+Vs	Brown
0V	Blue	Iout	Blue
Vout	Yellow		

CH1: 4 Pin, Hydraulic Type Connector (standard)

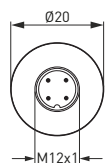


CABLE SIDE

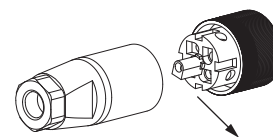
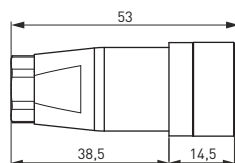


FRONT VIEW (FEMALE)

CN4A: M12x1, 4 Pin Connector (optional)

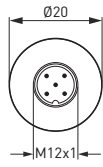


FRONT VIEW (FEMALE)

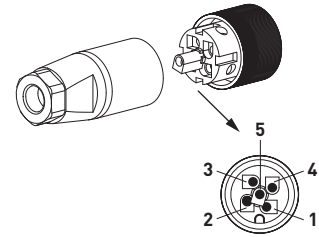
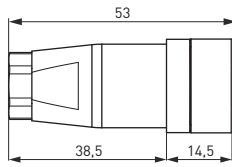


CABLE SIDE

CN5A: M12x1, 5 Pin Connector (optional)



**FRONT VIEW
(FEMALE)**



CABLE SIDE

Ordering Procedure

Model	Case model	Mechanical thread	Range	Output	Connector / Cable
OPTC	27	G1/4	B250	I40	CH1
OPTC : Ceramic	27	G1/4 G1/2	B2 : 2 bar B2,5 : 2,5 bar B4 : 4 bar B6 : 6 bar B10 : 10 bar B16 : 16 bar B25 : 25 bar B30 : 30 bar B40 : 40 bar B50 : 50 bar B100 : 100 bar B150 : 150 bar B200 : 200 bar B250 : 250 bar B350 : 350 bar B400 : 400 bar	V10: 0-10V I40: 4-20mA 4V5: 0,5-4,5V	CH1 : 4 pin, hydraulic type connector CN4A : M12, 4 pin connector CN5A : M12, 5 pin connector 1M5 : 1,5 meter cable